



Treatment of Severely Malnourished Children



Slide Set



TSMC 1



TSMC 2



TSMC 3

PHASE OF TREATMENT

STABILISATION → REHABILITATION

Step	Day1-2	Day 2-7+	Week 2-6
1. Hypoglycaemia	→		
2. Hypothermia	→		
3. Dehydration	→		
4. Electrolytes	→		
5. Infection	→		
6. Micronutrients	→ no iron	→ with iron	→
7. Cautious feeding	→		
8. Catch-up growth			→
9. Sensory stimulation	→		
10. Prepare for home care			→



TSMC 5



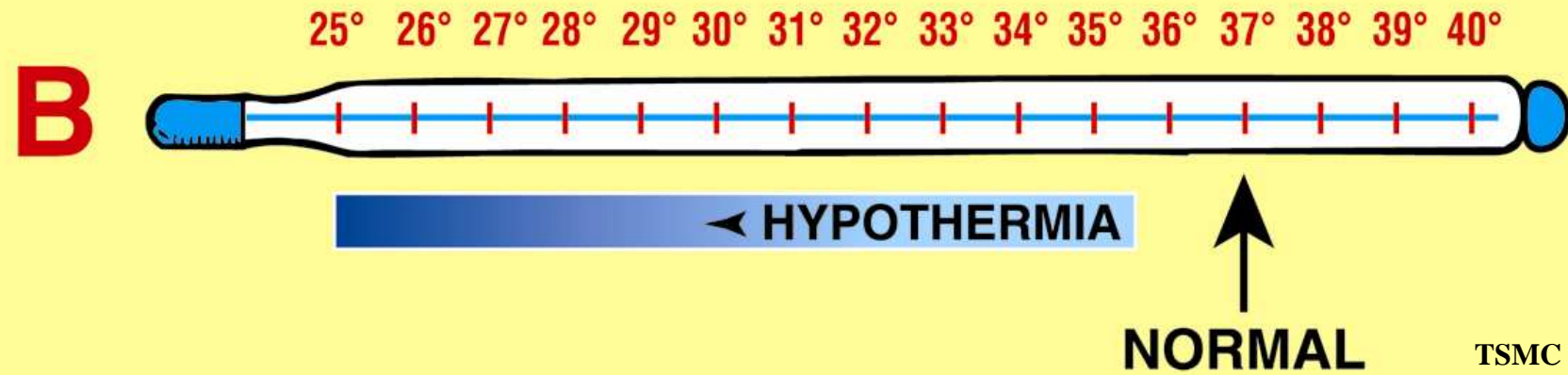
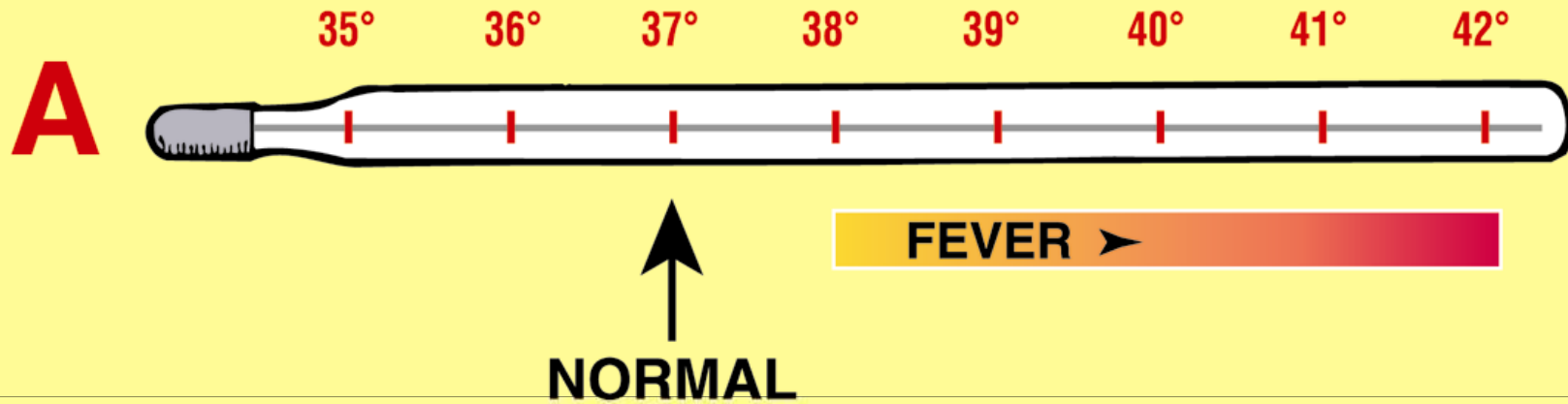
1



2

TSMC 6

Clinical Thermometers



	ORS	ReSoMal
Water	+++	+++
Sugar	++	+++
Sodium	++	+
Potassium	+	+++
Magnesium	0	+++

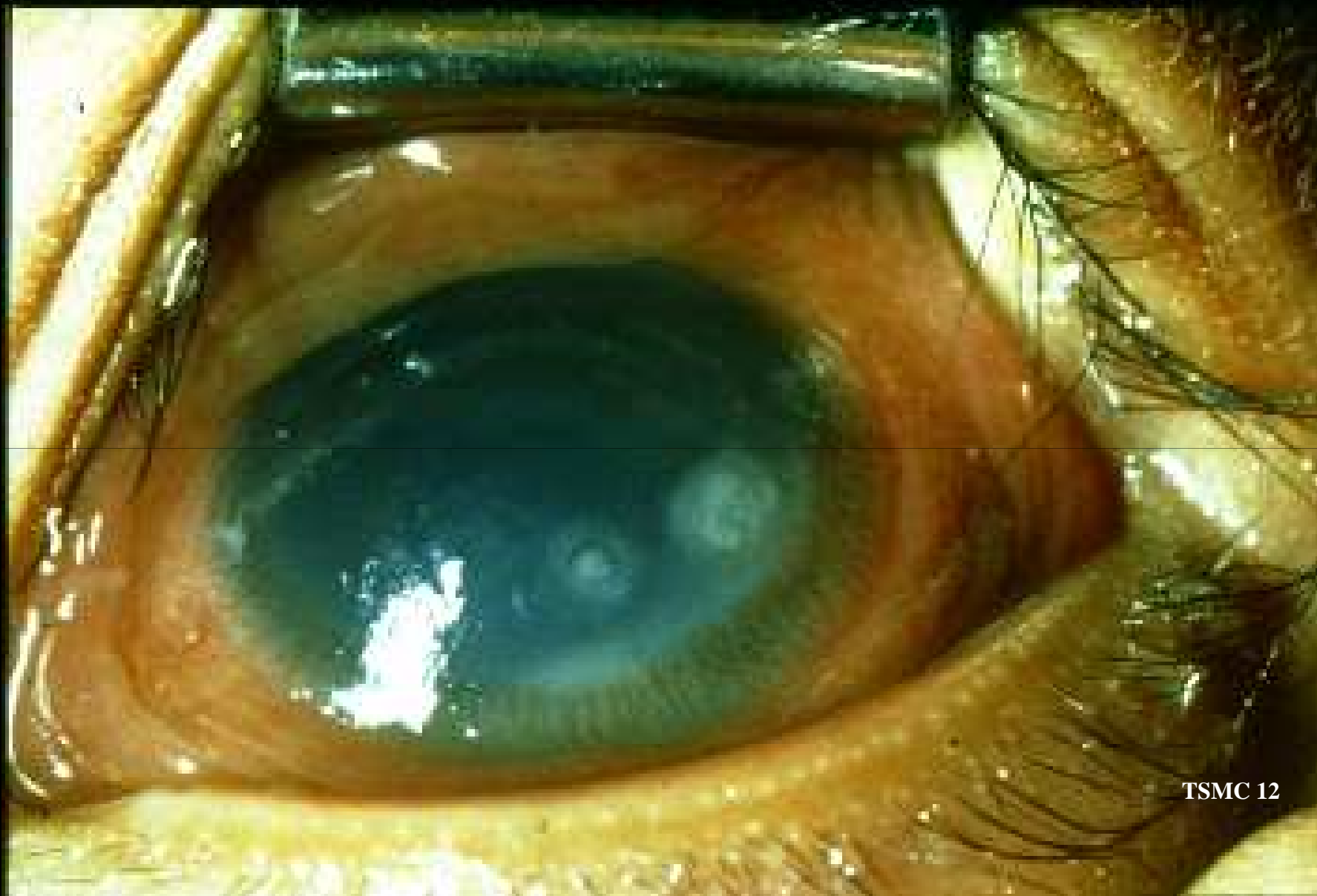




TSMC 10



TSMC 11



TSMC 12



TSMC 13

DAY	Starter formula		Number of feeds each day
	Total amount each day	Amount each feed	
	Volume per kg of body weight		
1-2	130ml	11ml	12 (2 hourly)
3-4	130ml	16ml	8 (3 hourly)
5-6	130ml	22ml	6 (4 hourly)





TSMC 16





TSMC 18





	Winston	Wilburn
Ht/Age	low	normal
Wt/Ht	normal	normal
Wt/Age	low	normal



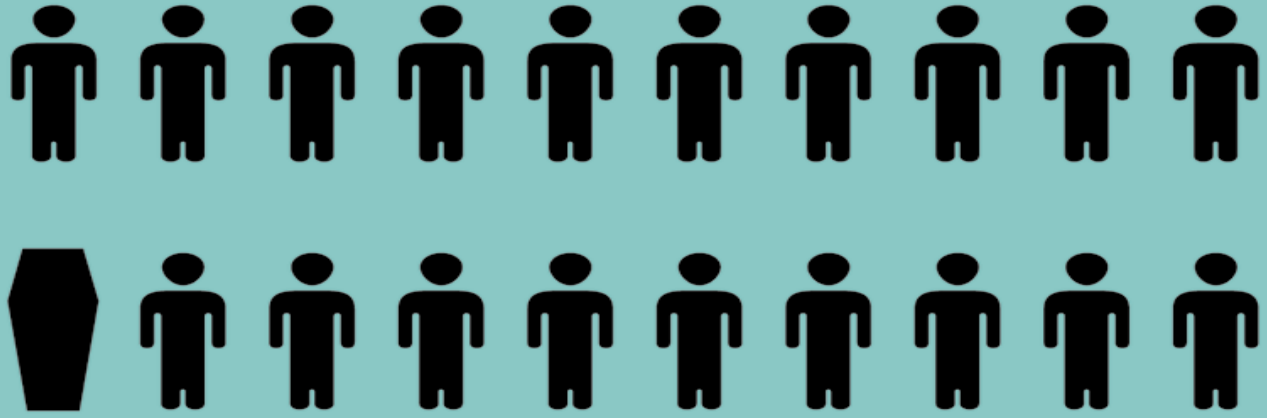


TSMC 22

Hospital

Children Treated

A



B

